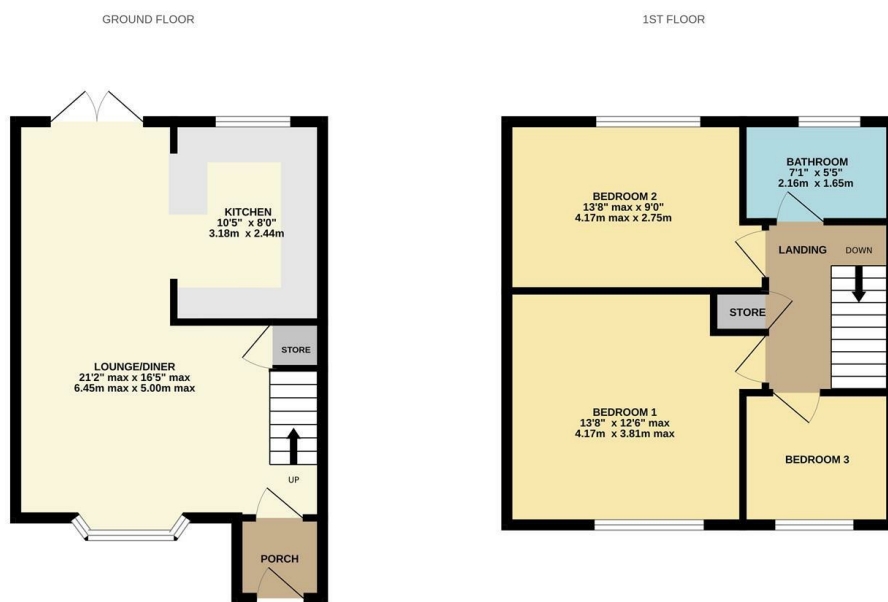




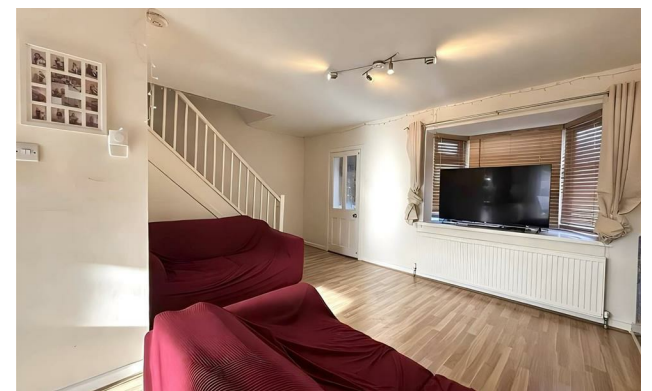
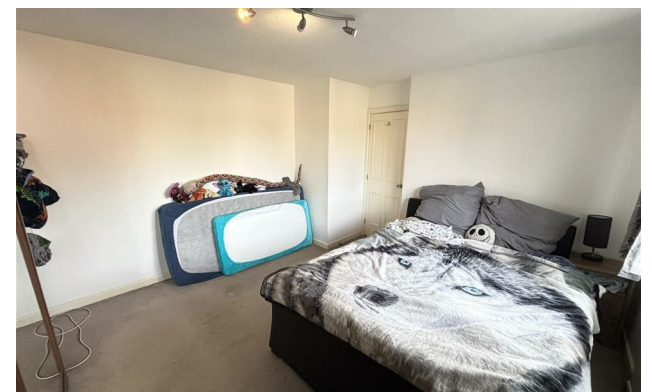
16 GORSEFIELD HEY WILMSLOW SK9 2NH

NO CHAIN. Take a look into this well presented three bedroom mews, located on the ever popular Summerfield Estate in Wilmslow. A short drive from Wilmslow centre, offering a wide range of amenities, including a number of local shopping facilities, bars, restaurants. Wilmslow and Handforth train stations are both within a five minute drive, offering a direct service to Manchester City centre.

The ground floor comprises an entrance porch that leads to the spacious L shaped open plan living/kitchen/dining area with feature bay window to the front aspect and UPVC french doors leading to the rear garden. The kitchen offers wood effect wall and base units with complementary worktops, breakfast bar and a handful of integrated appliances. Understairs storage is also accessible in the open plan space. To the first floor, there are three bedrooms with additional floor space in bedroom one and two created over the gated side access to the rear garden. The main bedroom also offers fitted storage space. The family bathroom presents a three piece white suite with overhead shower. Externally, the home offers excellent off road parking to the front aspect and a well presented rear garden which benefits from a south-easterly facing aspect. Viewings essential.



Measurements are approximate. Not to scale. Illustrative purposes only. Made with Metropix ©2020.



- No Chain
- Three Bedrooms
- Off Road Parking
- Popular Summerfields Location
- South-Easterly Facing Rear Garden
- Open Plan Kitchen/Living Space

Energy Efficiency Rating		Environmental Impact (CO ₂) Rating			
Very energy efficient - lower running costs	Current	Potential	Very environmentally friendly - lower CO ₂ emissions	Current	Potential
(92 plus) A			(92 plus) A		
(81-91) B			(81-91) B		
(69-80) C			(69-80) C		
(55-68) D			(55-68) D		
(39-54) E			(39-54) E		
(21-38) F			(21-38) F		
(1-20) G			(1-20) G		
Not energy efficient - higher running costs			Not environmentally friendly - higher CO ₂ emissions		
England & Wales			England & Wales		
	EU Directive 2002/91/EC		EU Directive 2002/91/EC		

Energy Efficiency Rating: 67 (Current), 86 (Potential)

Environmental Impact (CO₂) Rating: 86 (Current), 86 (Potential)